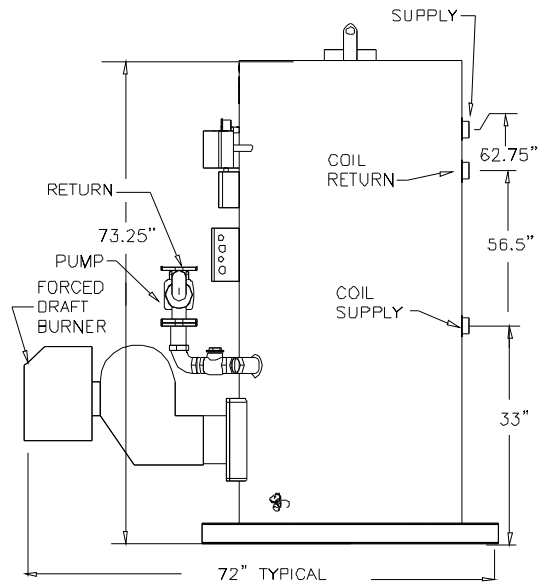
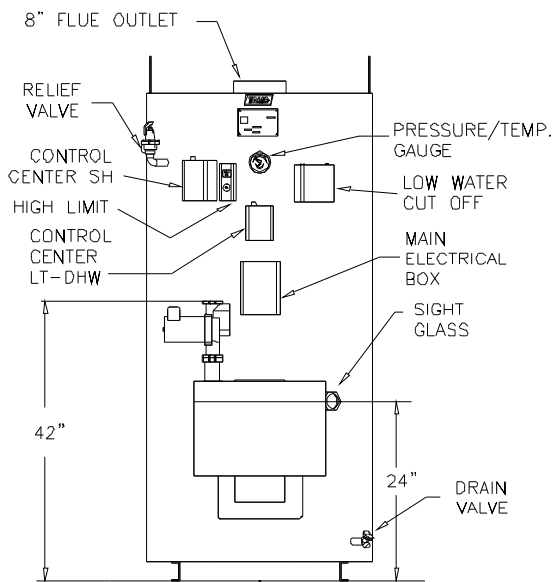
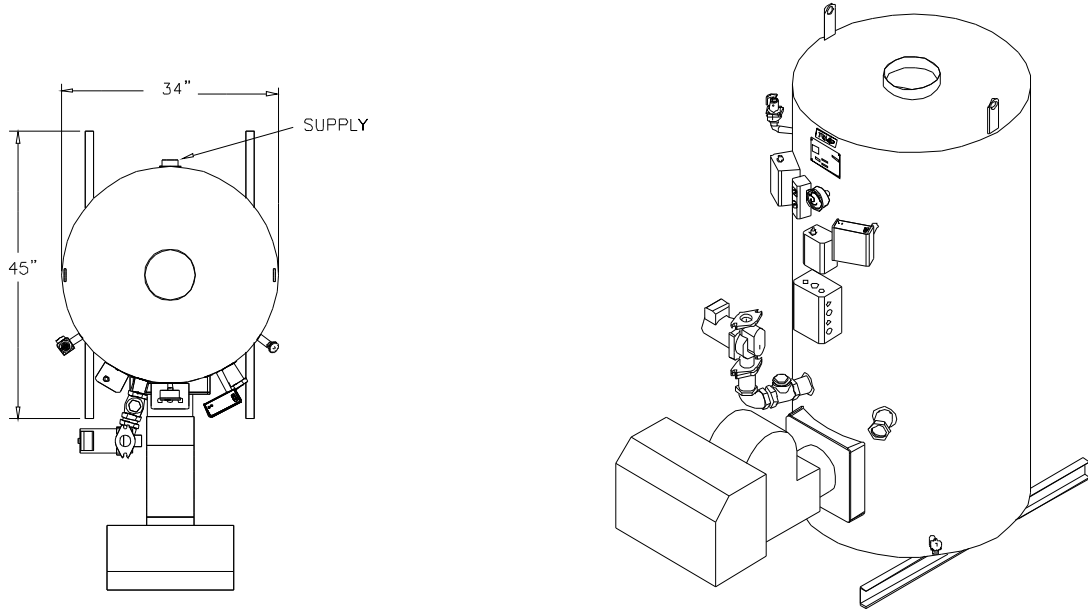


**ICON BOILER  
SERIES 1600 SPACE HEAT and LOW TEMPERATURE BOILER**



Note: Dimensions subject to change without notice.



## **SERIES 1600 BOILER (Model 1600 SH-C-LT)**

The Series 1600 is a steel vertical firetube packaged boiler with a water-backed combustion chamber equipped with high-efficiency turbulators. Boilers come fully wired, and fit through a 36" doorway.

### **STANDARD EQUIPMENT:**

Low/High/Off Power Burner (UL Listed)  
 Circulating Pump – Vessel Water  
 Circulating Pump – Coil Water  
 Honeywell Control Centers for SH and LT  
 Low Water Cut-Off  
 Combination Pressure/Temperature Gauge  
 Operating Light  
 Relief Valve  
 Second Safety High Limit with Manual Reset  
 Vessel Pressure Rating of 125 PSI  
 UL Listed Boiler/Burner Package.

### **OPTIONAL EQUIPMENT:**

Gas Fired (NG or Propane), Oil Fired, or Dual Fuel Burners  
 UL, IRI, FM and CSD-1 Compliance  
 Low/High/Low and Modulating Gas Trains  
 Sealed Combustion Air Intake  
 Barometric Dampers  
 LWCO with Manual or Auto Reset, Test Light, and/or Test Button

### **SPECIFICATIONS:**

<b>Input BTU/Hr</b>	<b>Output BTU/Hr</b>	<b>Efficiency</b>	<b>GPM @ °F Rise Vessel Side</b>	<b>GPM @ °F Rise Coil Side</b>
1,400,000	1,162,800	83.0%	116.7 @ 20°F	35.0 @ 50°F
1,500,000	1,245,000	83.0%	100.0 @ 25°F	35.0 @ 50°F
1,600,000	1,328,000	83.0%	106.7 @ 25°F	35.0 @ 50°F
1,700,000	1,411,000	83.0%	113.3 @ 25°F	35.0 @ 50°F

Note: Typical for Natural Gas. - Oil or LP burner data may vary.

### **APPLICATIONS:**

Space Heating – typical supply 180°F, return as low as 130°F,  
 Lower temperature Coil - for jobs such as in-floor radiant heating, snow melt, and heat pump applications.

### **CLEARANCES & CONNECTIONS:**

Clearance recommended between boilers - 6"; From front of burner for service – 10".  
 Vessel supply & return diameters – 2.0"; coil supply & return diameters – 1.5"

### **CONTROL:**

The Series 1600 can operate on its own controls, but a microprocessor control panel is recommended for sequencing more than two boilers to minimize run-time and fuel usage.

**Flue:** Category I when applied appropriately.

**POWER:** 120V, 60Hz, Single Phase, fused for 30 amps. Min / Max gas pressure, typically 5.9" / 14" WC

### **WEIGHT/VOLUME:**

Shipping Weight – 1700 lbs.  
 Operating Weight – 3037 lbs.  
 Water Volume – 109 gallons

ALL BURNER EQUIPMENT UL APPROVED

**ICON BOILER REPRESENTATIVE:**

ICON BOILER  
 2025 16th Street  
 Greensboro, NC 27455  
 (844)562-ICON  
 iconboiler.com