

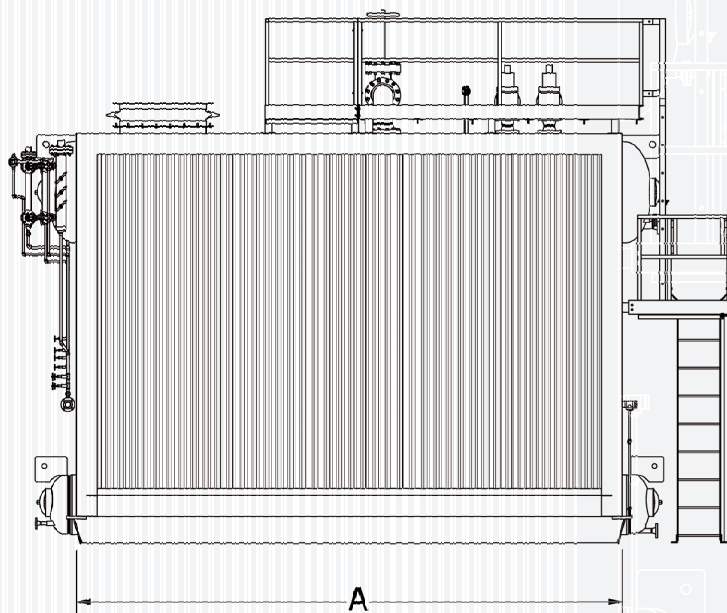
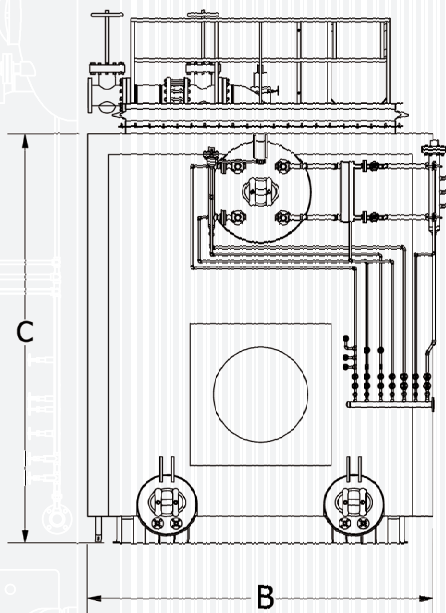


ICON BOILER



ANNAPOLIS

A-TYPE WATERTUBE BOILER



- + Capacities from 30,000 - 250,000 lb/hr
- + Design pressure up to 1,200 psig
- + Superheated steam temperature up to 900°F
- + Gas outlet configuration: top
- + Available as a Modular Boiler System

| | LENGTH (A) | WIDTH (B) | HEIGHT (C) |
|---------------|------------|-----------|------------|
| 30,000 LB/HR | 173 in. | 114 in. | 162 in. |
| 40,000 LB/HR | 202 in. | 120 in. | 162 in. |
| 50,000 LB/HR | 210 in. | 138 in. | 168 in. |
| 60,000 LB/HR | 232 in. | 138 in. | 168 in. |
| 70,000 LB/HR | 247 in. | 148 in. | 178 in. |
| 80,000 LB/HR | 266 in. | 148 in. | 178 in. |
| 90,000 LB/HR | 296 in. | 148 in. | 178 in. |
| 100,000 LB/HR | 291 in. | 148 in. | 184 in. |
| 125,000 LB/HR | 364 in. | 148 in. | 184 in. |
| 150,000 LB/HR | 424 in. | 150 in. | 194 in. |
| 175,000 LB/HR | 454 in. | 150 in. | 202 in. |
| 200,000 LB/HR | 490 in. | 155 in. | 202 in. |



At Icon Boiler we create and maintain reliable, sustainable, and safe boiler room environments for our mission critical customers throughout the Southeastern United States. We are proud to offer complete boiler systems, built to world class standards, right here in the USA.